

MOWGLI ARTES Business Applications & Space Solutions (1/2)



Supporting the energy transition through satellite-powered microgrid planning

- Promoting energy availability, reliability, quality and awareness in developing countries



Project overview

- Delivering high-quality, reliable energy at low costs remains a challenge for urban and rural areas, especially in developing countries
- i-EM developed a two-part, easy-to-use cloud-based microgrid solution that integrates EO data, Satcom and Satnav to offer a range of services for optimal planning, design, operations and maintenance of microgrids.

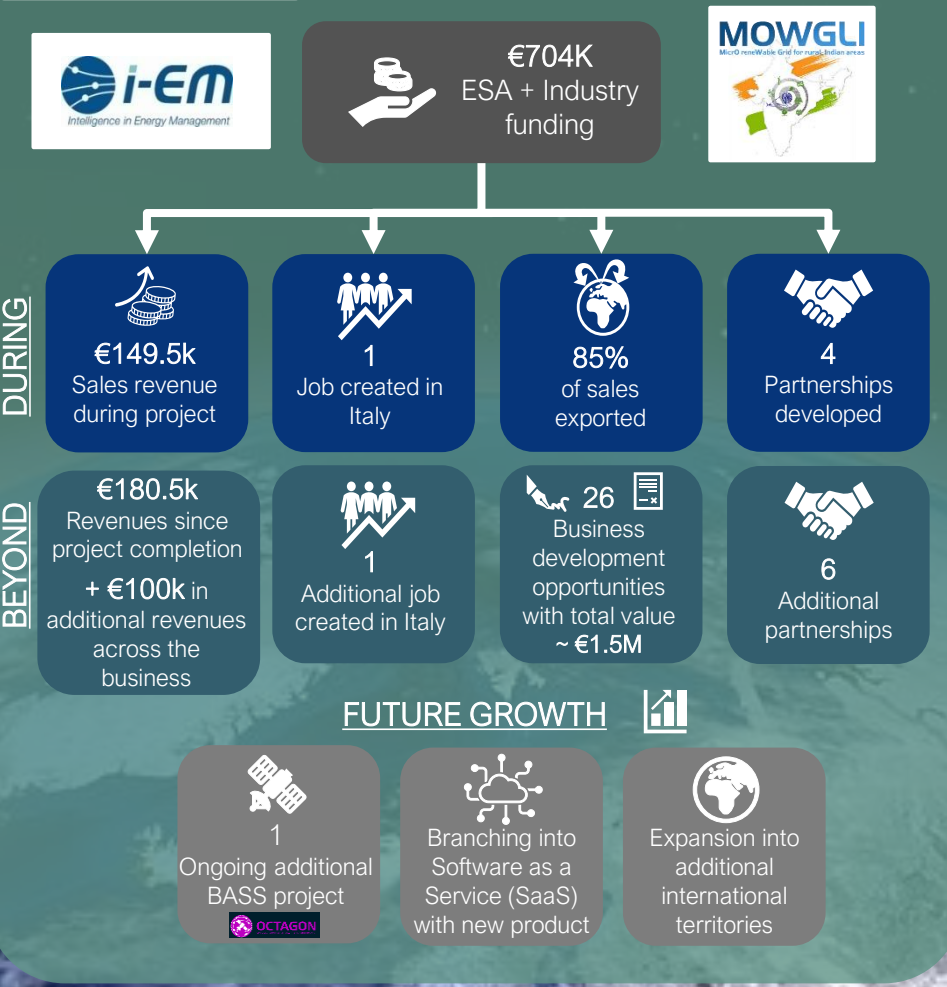
"Being able to participate in projects within the BASS programme, allows innovative companies like i-EM to experiment with cutting-edge digital solutions supported by satellite technologies, and explore new business opportunities"
Ciro Lanzetta, CEO, i-EM S.r.l

Benefits

- Optimises microgrid design by analysing real-time energy availability and resource allocation for sustainability and scalability
- Provides reliable energy access in rural areas enabling critical infrastructure and connectivity for telemedicine and tele-education
- Accelerates microgrid deployment with a 50-70% reduction in design time
- Making sustainable energy more affordable by reducing CAPEX by 10-40% compared to traditional microgrid designs
- Lowers operational costs by 10-15% through digitalisation, improving energy efficiency and minimising maintenance expense



Project success



THEMATIC AREA

ENERGY



MOWGLI ARTES Business Applications & Space Solutions (2/2)

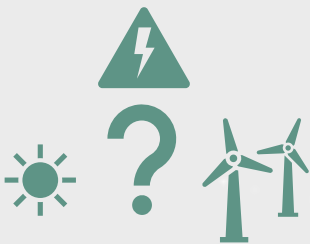
- Energy simulator tool expected to attract significant business for ABB



ABB: >1 year of use

Customer need

A tool to support customers to independently configure their renewable energy systems



Solution

Promotion of **energy simulator tool** developed through MOWGLI. The tool enables end users to better understand CO2 reduction and payback time of renewable energy solutions. Informs decisions about system adoption.



Impact and feedback

- ✓ Simple and intuitive system
- ✓ Very positive feedback from all end customers
- ✓ Significant increase in business expected in 2025
- ✓ The tool is expected to attract many new business opportunities



Customer impact

